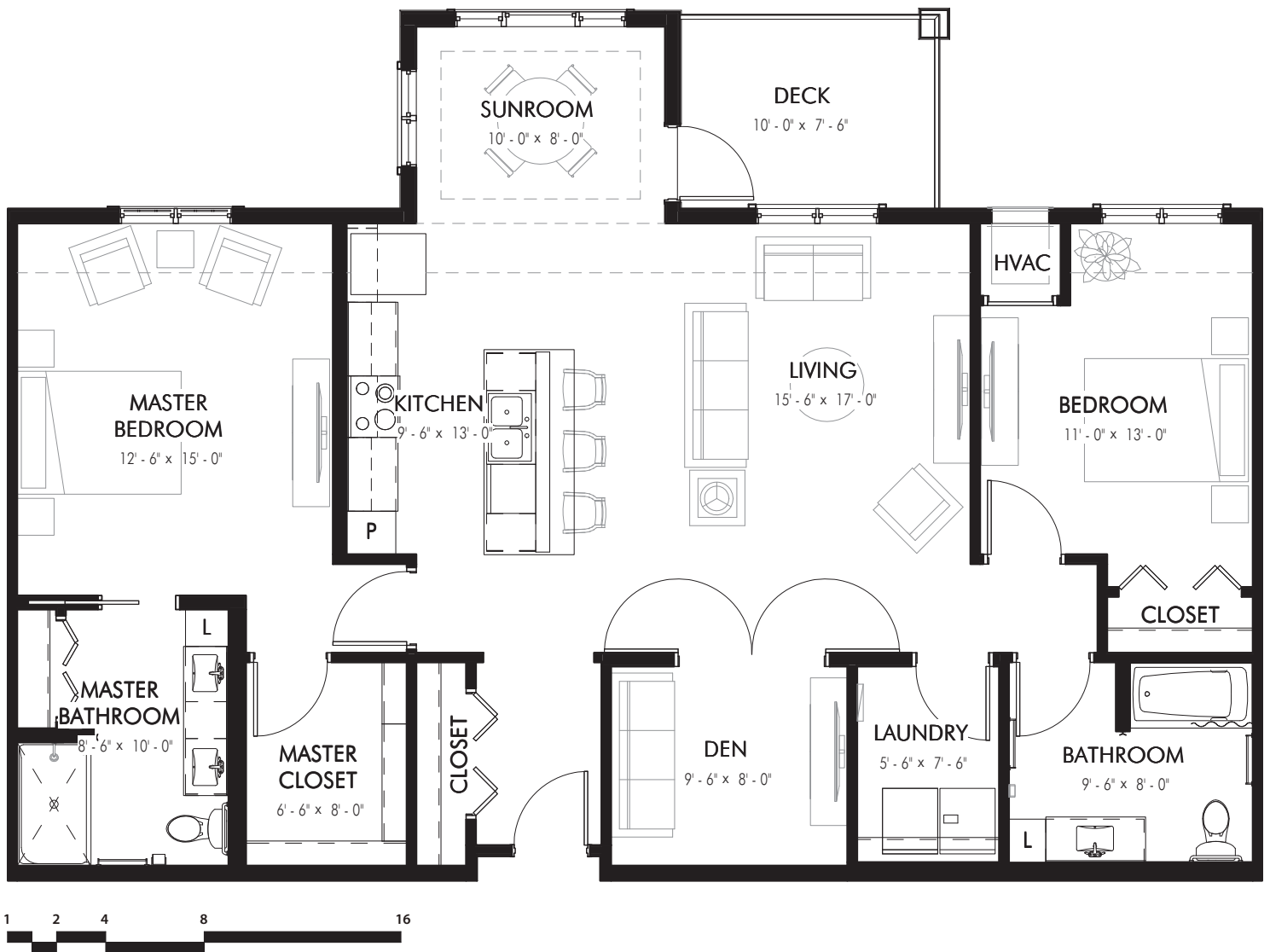


SALLY RIDE

Two Bedroom + Den | Two Bathroom
1,385 Sq Ft



THE AMERICAN COOPERATIVE

ANOKA | MN



Actual dimensions may vary.
Plans are subject to change without notice.
Current version dated 4/24/20, previous versions void.

SALLY RIDE

Two Bedroom + Den | Two Bathroom **Living Room & Kitchen**



SALLY RIDE

Two Bedroom + Den | Two Bathroom **Dining Room & Living Room from Kitchen**



SALLY RIDE

Two Bedroom + Den | Two Bathroom **Master Bedroom**



SALLY RIDE

Two Bedroom + Den | Two Bathroom **Guest Bedroom**

